

# MAJESTIC

Majestic Manufacturing, Inc.  
PO Box 128, 4536 State Rte. 7  
New Waterford, Ohio 44445

## ATTN: OWNER/OPERATOR

This bulletin pertains to operation of your Majestic unit. This Service Bulletin **must** remain with the owner's manual. If you have any questions regarding this bulletin, contact our office at: (330) 457-2447, M-F 8:00 am. - 4:30 p.m. EST \* Fax: (330) 457-7490.

## SERVICE BULLETIN

Date: June 27, 2000

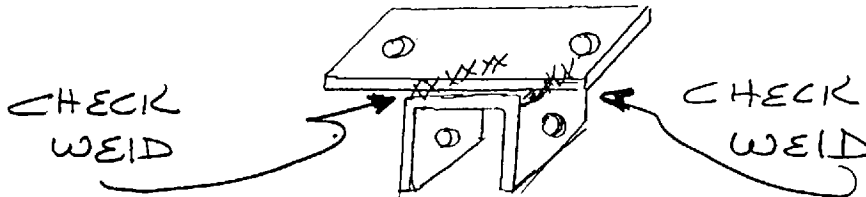
S.B. Number: 2000-6

Notice: **Musik Express Tub Bracket Assembly**

This service bulletin is to be observed by all **Musik Express** owners and operators.

All pin attachment points under each tub must be inspected immediately and report to Majestic Mfg. if any cracking is found. The area to look for is the weldment between the flat plate and U channel.

See Fig. 1



This inspection must be performed prior to next operation of ride and any cracks or broken welds **must** be repaired immediately and not put into service until a thorough inspection and repairs has been performed.

If unsure about each and every pin attachment point location, please call Majestic Manufacturing, Inc.

If you have any questions on factory standards or procedures on our equipment contact Majestic Manufacturing, Inc. during business hours: 8:00 am. to 4:30 p.m. Monday - Friday, Eastern Standard Time at (330) 457-2447.

---

**Dedicated to Safety in the Amusement Industry**