

TELEFAX

AmTech / Amusement Technologies Intl. Inc.

3306 N. Main St. Cleburne, TX 76033
Tel: 817-641-5045 * Fax: 817-645-9109
Web Site: www.Amtechintl.com
E-mail: E-mail@amtechintl.com

Date: January 3, 2003

ID #: SOO010303Z

Pages:

To: All Spin Out Owners

Safety Alert

Re: Sweep failure incident in Puerto Rico.

Tivoli Mfg. Ltd. has been informed of a structural failure, which caused the vehicle support sweep(1 of 6) to detach from the ride. This ride was being operated by Amusements of America in Puerto Rico. From information received through operators no life threatening injuries had occurred.

It is **absolutely necessary** that all vehicle support sweeps on all Spin Outs be inspected immediately according to the bulletin **SOSA005 Issued July 1, 2001**. If any cracking is detected stop operation of ride immediately until proper repairs are made.

Please notify Tivoli, Ltd. or AmTech/ Amusement Technologies Intl. Inc. the results of the inspection.

For Tivoli Mfg. Ltd.
AmTech/ Amusement Technologies Inc.

Tivoli MFG Ltd.

Howfield Lane, Chartham, Canterbury, Kent. CT4 7HG. England
Telephone: 01227 731156 Facsimile: 01227 730137

Safety Bulletin

Bulletin No: SOSA005

Ride Type: Spin Out

(Aka. The Claw, The Maelstrom, El Nino)

Date: July 1, 2001

Rides Included: All Rides

Pages: 2

Parts Supplied: At request

Purpose: Sweep Arm Cracking

It has come to the attention of Tivoli Mfg. Ltd. from the original designers of the Spin Out, KMG Europe BV, that there has been cases where cracks have been detected on the sweep arms (see attached drawings) of Spin Out rides operating in Europe.

As of this time there has been no reports of this type cracking from operators of Spin Outs rides operating in the USA.

Tivoli Mfg. Ltd requires that all operators inspect the areas indicated on the attached drawings. If cracking is detected please report to AmTech / Amusement tech. intl. Inc. at 817-641-5045 for repair procedures and gusset kits.

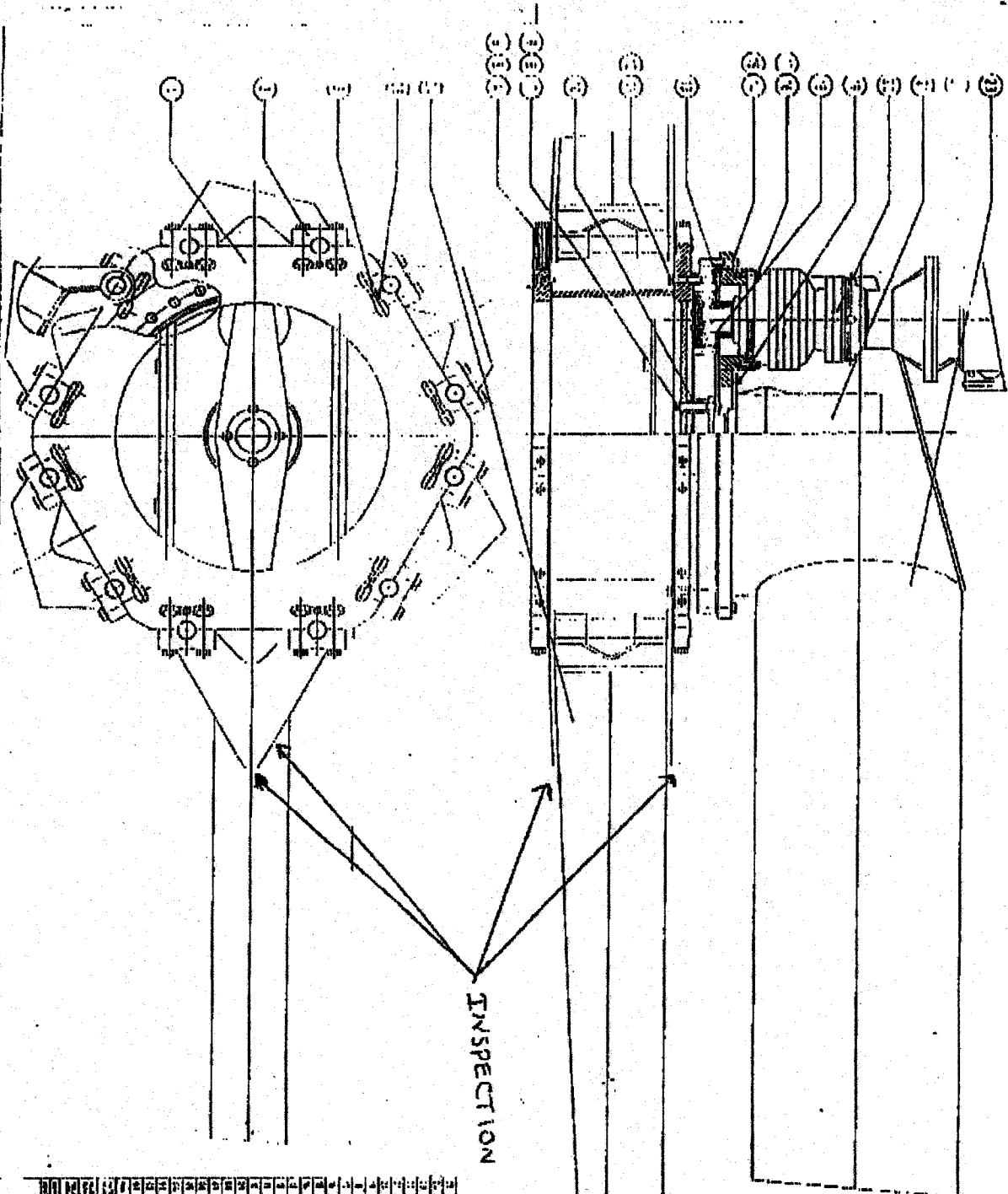
As of the date of this bulletin gusset plates are not required unless cracking is detected. Rides manufactured to operate in Europe are run at different speeds than those operated in the USA, making it possible that this problem may only be applicable to rides operating in Europe. Please report to AmTech after inspection whether cracks are detected or not so proper action can be taken.

If no cracks are detected as described in the attached drawing, a monthly inspection of this area of the sweeps should added to your existing inspection procedures.

If required, gusset plates will be made available free of charge and can be ordered through Amtech / Amusement Technologies Int'l. Inc.

If there are any questions please call AmTech/Amusement Tech. Int'l. Inc. at 817-641-5045.

For Tivoli Mfg. Ltd
AmTech / Amusement Technologies Int'l. Inc.



INSPECTION AREA

NO.	DESCRIPTION	QTY	UNIT	REMARKS
1	SCREW	1	PC	
2	SCREW	1	PC	
3	SCREW	1	PC	
4	SCREW	1	PC	
5	SCREW	1	PC	
6	SCREW	1	PC	
7	SCREW	1	PC	
8	SCREW	1	PC	
9	SCREW	1	PC	
10	SCREW	1	PC	
11	SCREW	1	PC	
12	SCREW	1	PC	
13	SCREW	1	PC	
14	SCREW	1	PC	
15	SCREW	1	PC	
16	SCREW	1	PC	
17	SCREW	1	PC	
18	SCREW	1	PC	
19	SCREW	1	PC	
20	SCREW	1	PC	
21	SCREW	1	PC	
22	SCREW	1	PC	
23	SCREW	1	PC	

COBRA