



CHANCE RIDES, INC.
4219 Irving
Wichita, KS 67277-2328
U.S.A.
Phone: 1-800-242-6231 • FAX: 1-316-942-7416
Website: www.rides.com
E-mail: rides@rides.com

Bulletin No:	B408R1216-0
Release Date:	September 10, 1999
Effective Date:	September 10, 1999
Supersedes:	N/A
Completion Date:	October 10, 1999
Page:	1 of 6

SERVICE BULLETIN

Ride Manufacturer: CHANCE RIDES, INC. Affected Production Dates: 6/28/96 through 1/28/97

Ride Name: CHAOS Affected Serial Nos.: 408-00296 through 408-01997

Model No.: 408

Abstract of Issue:
Lap Bar Lock Inspection, Repair and Maintenance

Reason For Release:
The lap bars on the CHAOS amusement ride each incorporate two latch mechanisms. In addition to the redundant latches, the secondary restraint bar further secures the lap bars.

Chance Rides, Inc. has become aware that the lap bar latches and related components can wear after extended use. If the wear becomes severe, the lap bar cannot be securely locked. This can result in serious personal injury to the passenger.

DO NOT OPERATE THE RIDE UNLESS ALL LAP BAR LOCKING DEVICES ARE IN GOOD OPERATING CONDITION. This includes both latches on each lap bar, the lap bar padding, and all components of the secondary restraint bar.

Action to be Taken:
All owners of the above noted amusement rides are required to inspect and maintain all lap bars as instructed in this bulletin. Any worn, damaged or missing parts must be repaired or replaced immediately.

All work must be performed by qualified personnel, capable of understanding the function of the parts and their proper installation.

NOTICE

Use only those components authorized, specified or provided by Chance Rides, Inc.

Chance Rides, Inc. SPECIFICALLY DISCLAIMS ANY LIABILITY for losses associated with any unauthorized alterations and/or modifications or additions and installations of unauthorized components.



CHANCE RIDES, INC.
4219 Irving
Wichita, KS 67277-2328
U.S.A.
Phone: 1-800-242-6231 • FAX: 1-316-942-7416
Website: www.rides.com
E-mail: rides@rides.com

Bulletin No:	B408R1216-0
Release Date:	September 10, 1999
Effective Date:	September 10, 1999
Supersedes:	N/A
Completion Date:	October 10, 1999
Page:	5 of 6

Ride Manufacturer: CHANCE RIDES, INC.

Affected Production Dates: 6/28/96 through 1/28/97

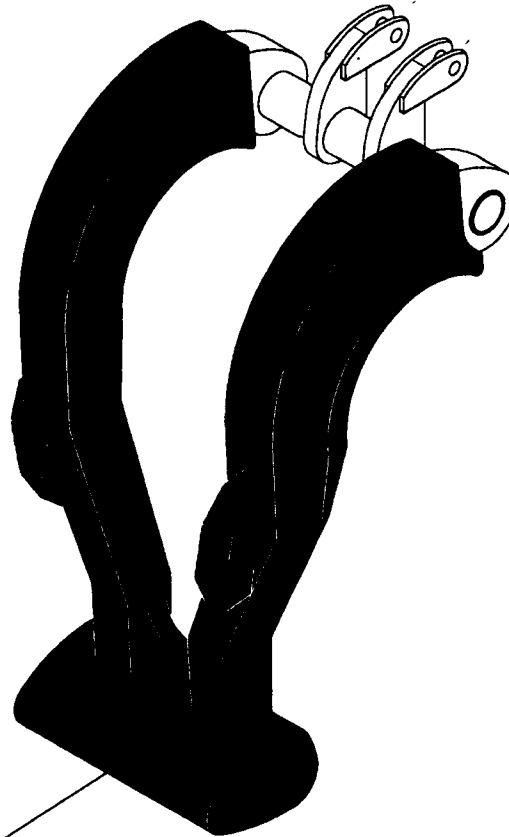
Ride Name: CHAOS

Affected Serial Nos.: 408-00296 through 408-01997

Model No.: 408

Detail of Issue (continued):

3. Inspect the lap bar padding where it contacts the secondary restraint bar. If the padding has a groove matching the contact area of the secondary restraint bar, this indicates the latching washers are worn. The lap bar padding must be in good condition.



Inspect padding in this area for grooves matching the contact area with the secondary restraint bar



CHANCE RIDES, INC.
4219 Irving
Wichita, KS 67277-2328
U.S.A.
Phone: 1-800-242-6231 • FAX: 1-316-942-7416
Website: www.rides.com
E-mail: rides@rides.com

Bulletin No:	B408R1216-0
Release Date:	September 10, 1999
Effective Date:	September 10, 1999
Supersedes:	N/A
Completion Date:	October 10, 1999
Page:	4 of 6

Ride Manufacturer: CHANCE RIDES, INC.

Affected Production Dates: 6/28/96 through 1/28/97

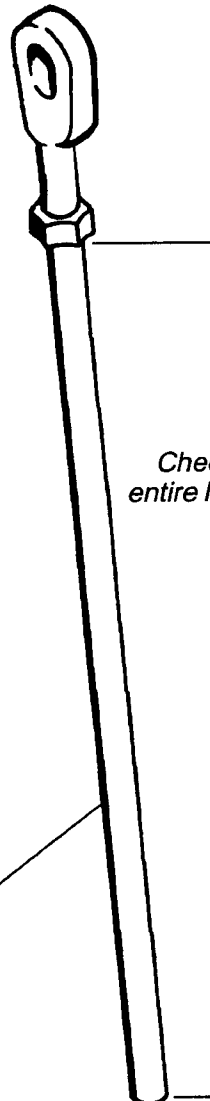
Ride Name: CHAOS

Affected Serial Nos.: 408-00296 through 408-01997

Model No.: 408

Detail of Issue (continued):

2. Inspect the latching rods. The entire length of the rod must be clean, smooth and free of corrosion or other damage



*Check condition along
entire length of latching rod*

*Latching rod
(part number
408-152-001)*



CHANCE RIDES, INC.
4219 Irving
Wichita, KS 67277-2328
U.S.A.
Phone: 1-800-242-6231 • FAX: 1-316-942-7416
Website: www.rides.com
E-mail: rides@rides.com

Bulletin No:	B408R1216-0
Release Date:	September 10, 1999
Effective Date:	September 10, 1999
Supersedes:	N/A
Completion Date:	October 10, 1999
Page:	3 of 6

Ride Manufacturer: CHANCE RIDES, INC. Affected Production Dates: 6/28/96 through 1/28/97

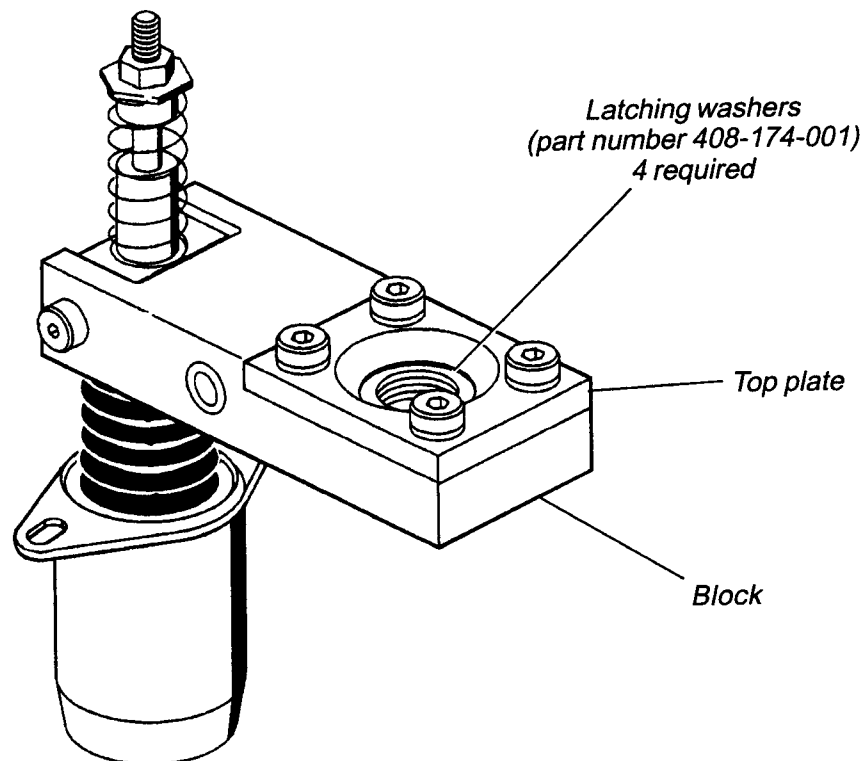
Ride Name: CHAOS Affected Serial Nos.: 408-00296 through 408-01997

Model No.: 408

Detail of Issue (continued):

1. Inspect the lap bar latches for the following:

- The inside diameter of the four latching washers must not show signs of chamfering. The inside edges must be square, with no elongation of the holes.
- If the holes in the top plate or block show signs of contact with the latching rod, this indicates wear of the latching washers.
- All parts must be clean and free of lubricants or any other residue. When assembled, the washers must move freely in the block.





CHANCE RIDES, INC.
4219 Irving
Wichita, KS 67277-2328
U.S.A.
Phone: 1-800-242-6231 • FAX: 1-316-942-7416
Website: www.rides.com
E-mail: rides@rides.com

Bulletin No:	B408R1216-0
Release Date:	September 10, 1999
Effective Date:	September 10, 1999
Supersedes:	N/A
Completion Date:	October 10, 1999
Page:	2 of 6

Ride Manufacturer: CHANCE RIDES, INC.

Affected Production Dates: 6/28/96 through 1/28/97

Ride Name: CHAOS

Affected Serial Nos.: 408-00296 through 408-01997

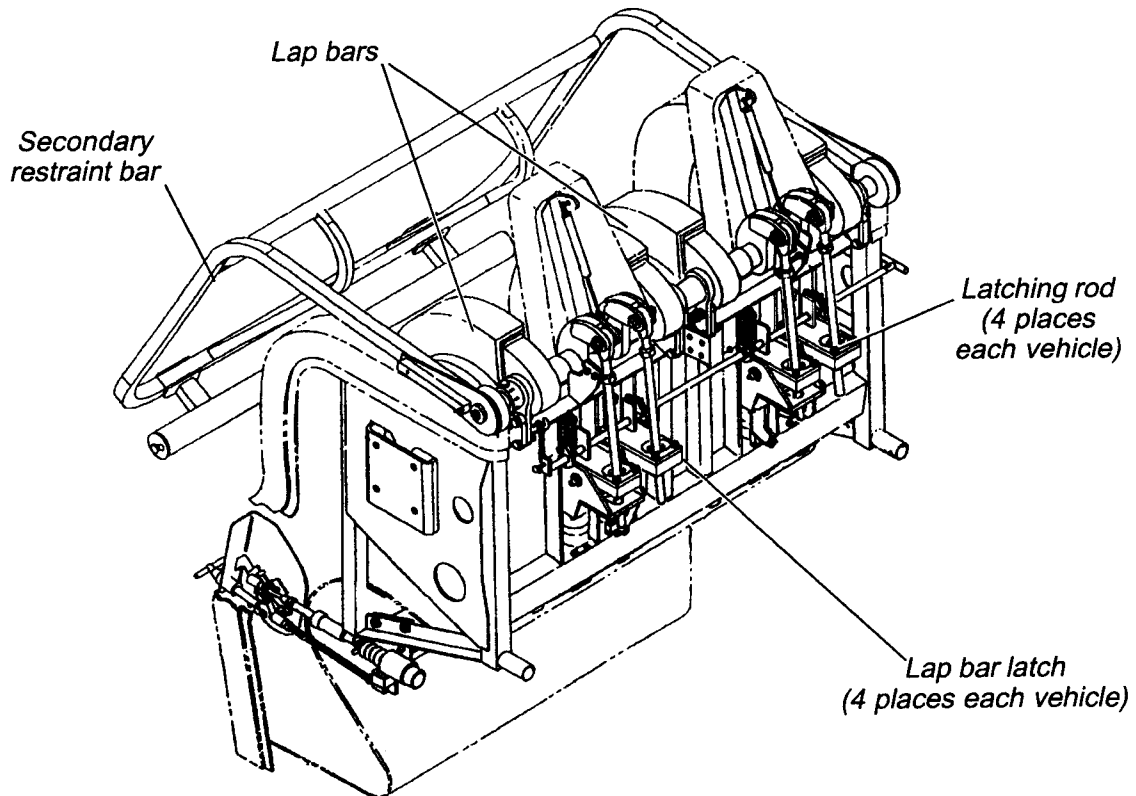
Model No.: 408

Detail of Issue (continued):

INSPECTION PROCEDURE

Inspect the lap bar lock components as described on the following pages of this bulletin. Replace any components that are worn or damaged.

The components are identified in the illustration below.





CHANCE RIDES, INC.
4219 Irving
Wichita, KS 67277-2328
U.S.A.
Phone: 1-800-242-6231 • FAX: 1-316-942-7416
Website: www.rides.com
E-mail: rides@rides.com

BulletinNo:	B408R1216-0
Release Date:	September 10, 1999
Effective Date:	September 10, 1999
Supersedes:	N/A
Completion Date:	October 10, 1999
Page:	6 of 6

Ride Manufacturer: CHANCE RIDES, INC.

Affected Production Dates: 6/28/96 through 1/28/97

Ride Name: CHAOS

Affected Serial Nos.: 408-00296 through 408-01997

ModelNo.: 408

Detail of Issue (continued):

WEEKLY OPERATIONAL CHECK

With the cover removed from the rear of the vehicle, watch the operation of the two lap bar latches. Repeat the process for both lap bars on every vehicle. This check must be made weekly or at every set-up, whichever occurs first.

1. Make sure the latching washers move freely. **DO NOT LUBRICATE THE WASHERS OR LATCH RODS.**
2. As the lap bar is raised, the left hand latch must fully engage and lock on the latching rod before the right hand latch engages.
3. Manually hold the left hand latch up to prevent it from engaging on the latch rod. As the bar is raised, the right hand latch must fully engage on the latching rod.
4. Check the operation of the secondary restraint bar. With the secondary restraint bar closed, manually release and raise each lap bar. Check for solid contact between the lap bar padding and the secondary restraint bar.